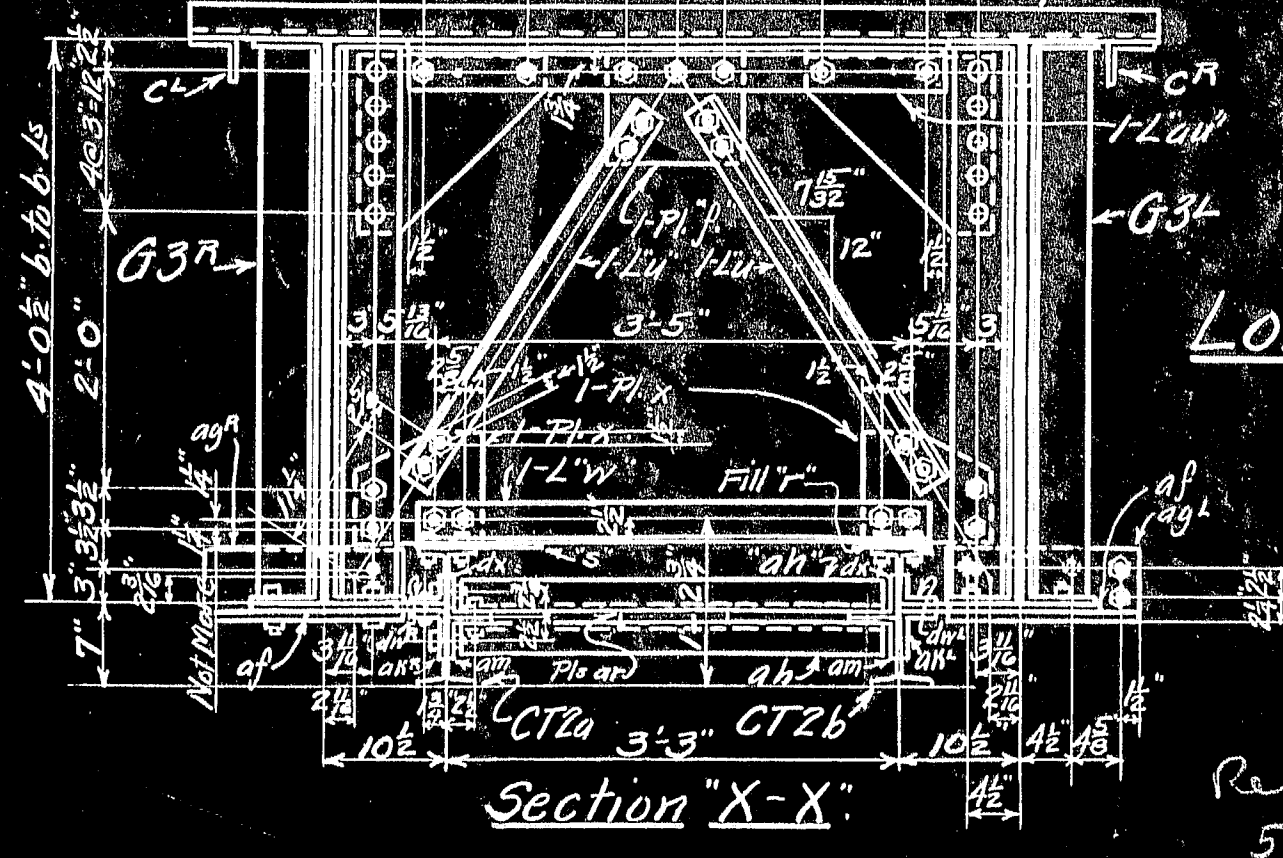
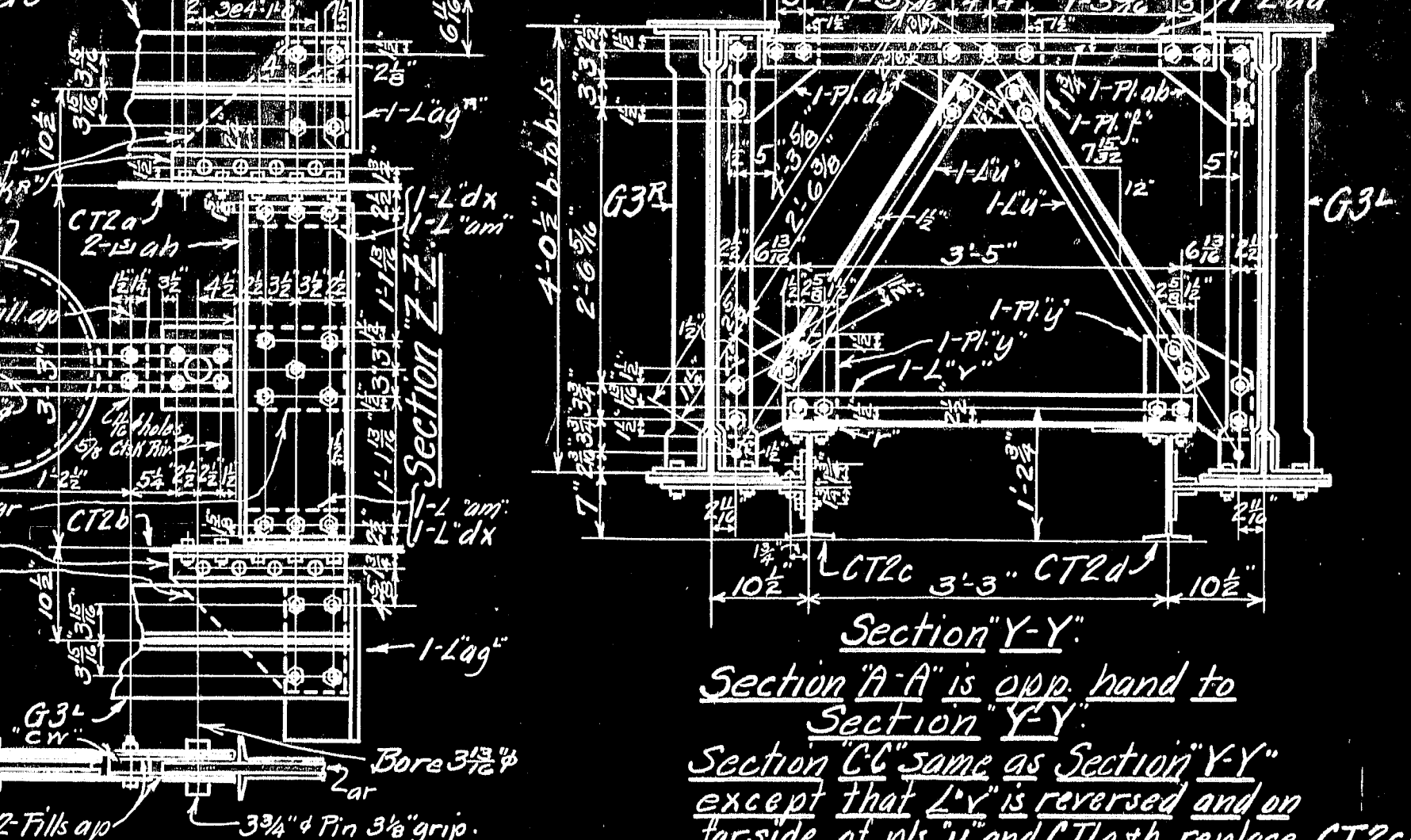


General Notes: Holes for turned bolts to be drilled to template. Paint beams, plates and angles are coat of black. New holes in flanges of beams, C11 and C12 are to be 1/2" except as noted. All other holes 5/8". Edge distances to sheared edges not given are 1 1/2".

Note: Fasten sheaves to T11 in such a manner that pins will not be bent in handling.

Detail for 3/4" pin.
Scale 3" = 1'-0"

Detail for 1 1/2" x 24" pin.



Lower Portion of Traveler for Erecting Towers
R.W.A. Project No. 10101
Deer Isle Sedgwick Bridge District
Bridge over Eggemoggin Beach
from Little Deer Isle to Sedgwick
Hancock County, Maine
Robinson & Steinman Engineers, New York City
The Phoenix Bridge Co.
Erection Dept.
Engr. R. S. Foulds.
Draftsman: Frank W. Peirce.
Scale: 1" = 1'-0"
Date: 11/1/33
Supt. of Erection. **C.O. 457** **Dwg. T3A.**

